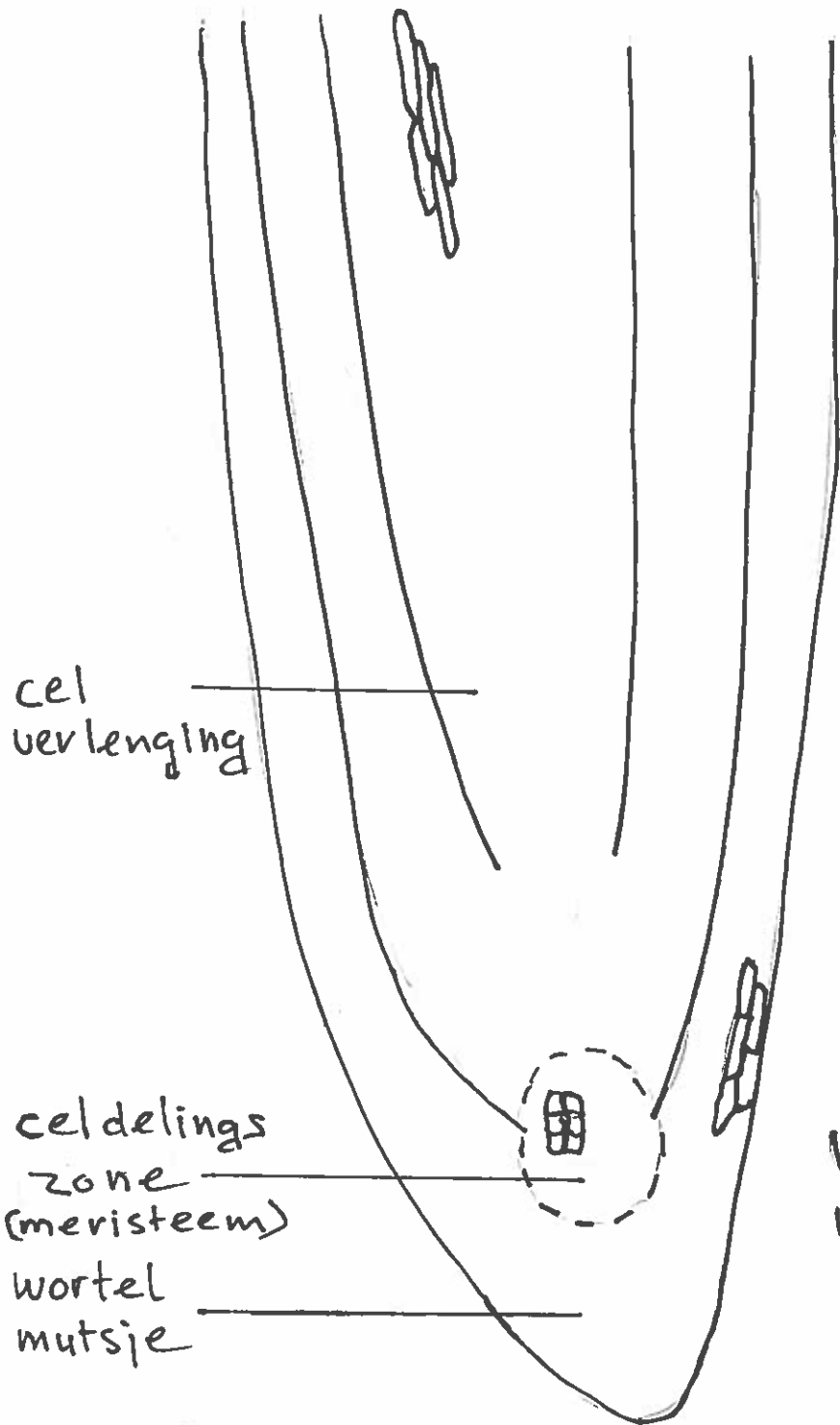
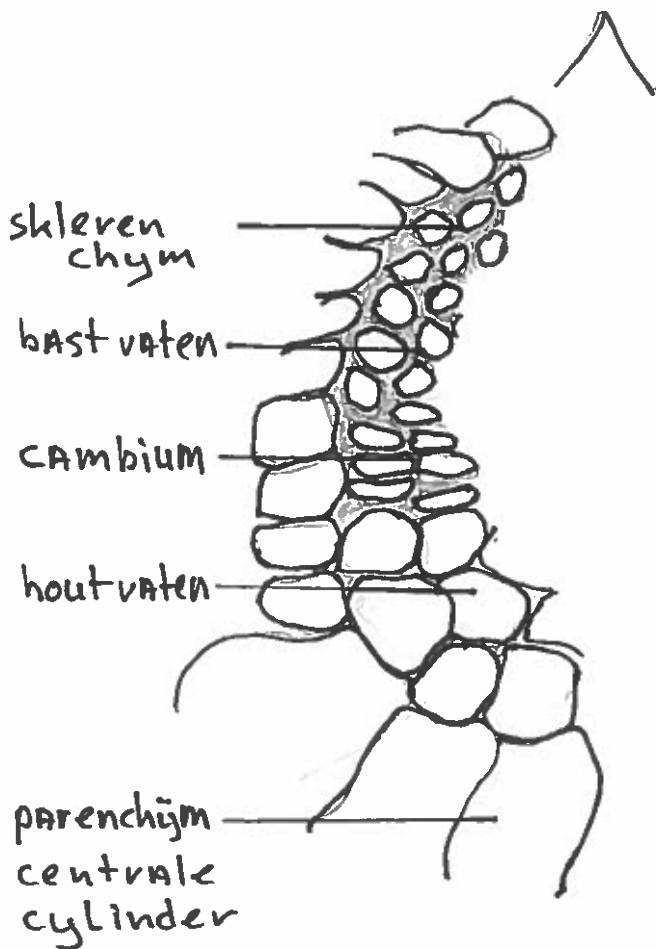
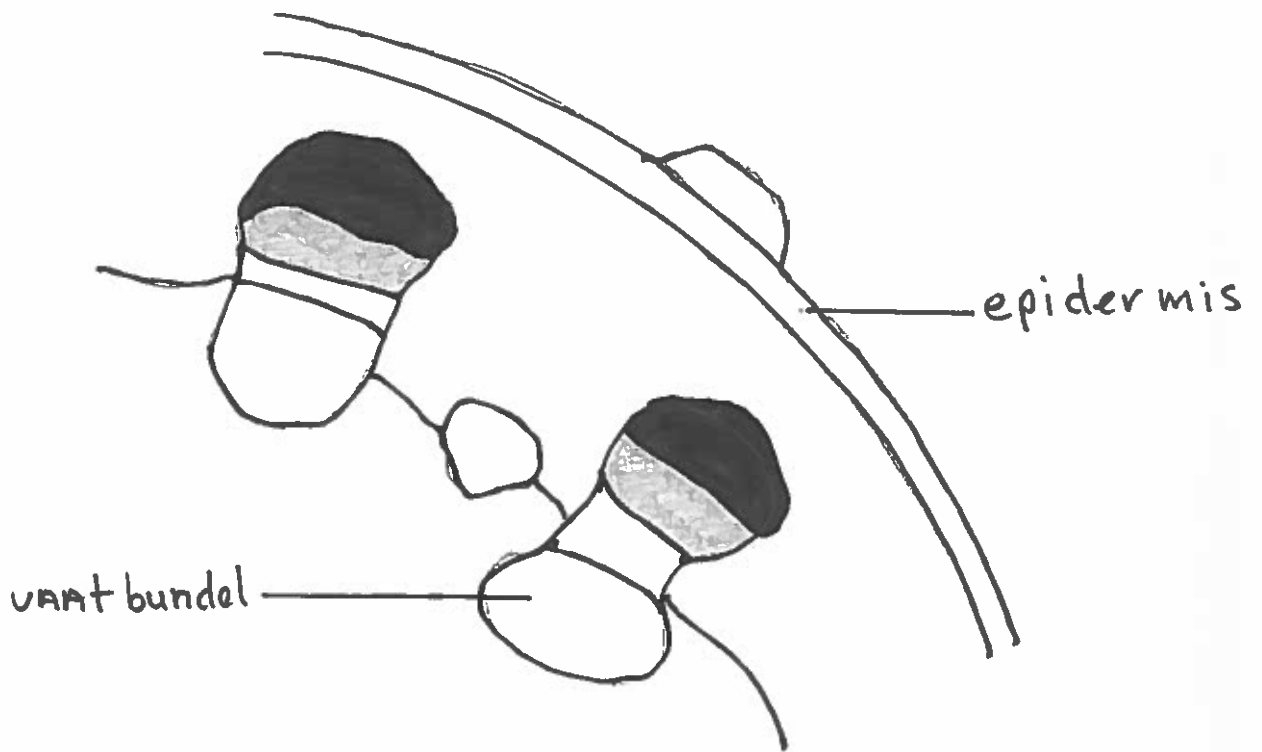


Allium cepa (ui)
epidermis

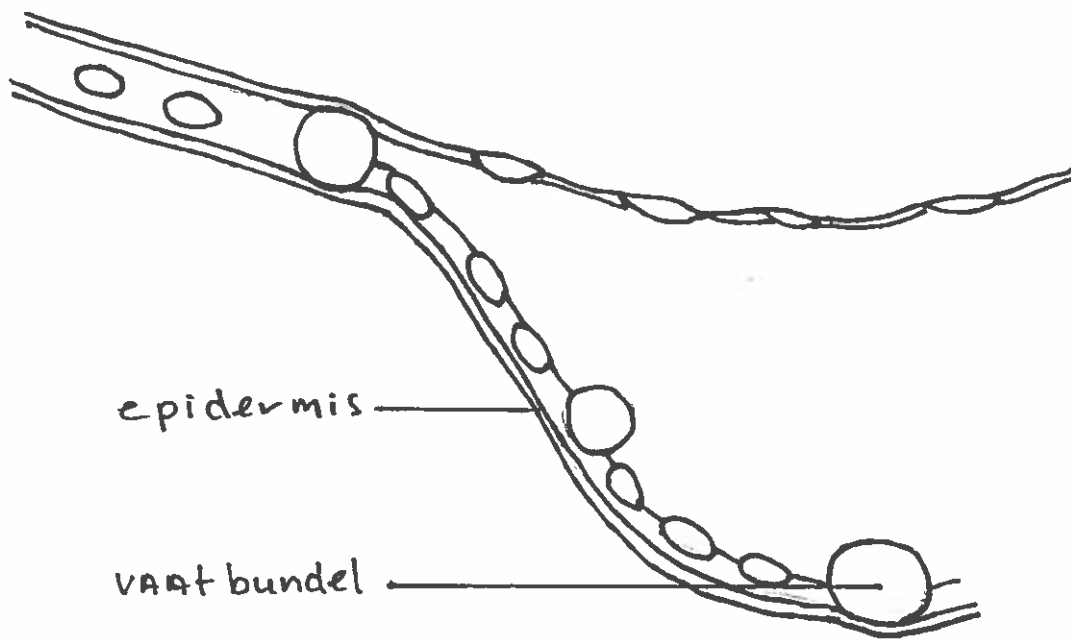
1-13



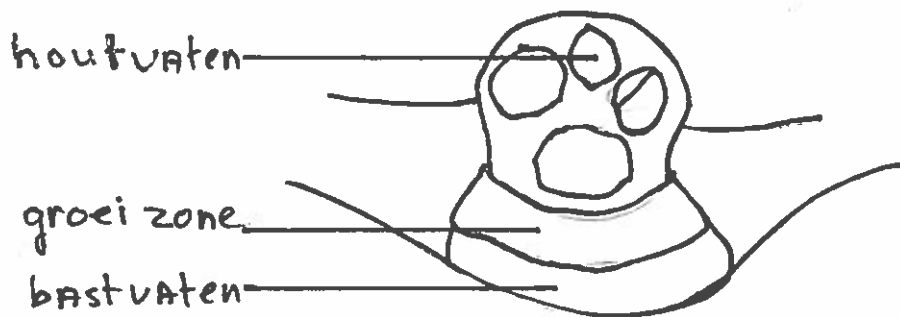
Vicia faba (tuinboon)
wortel lengte
doorsnede
1-21

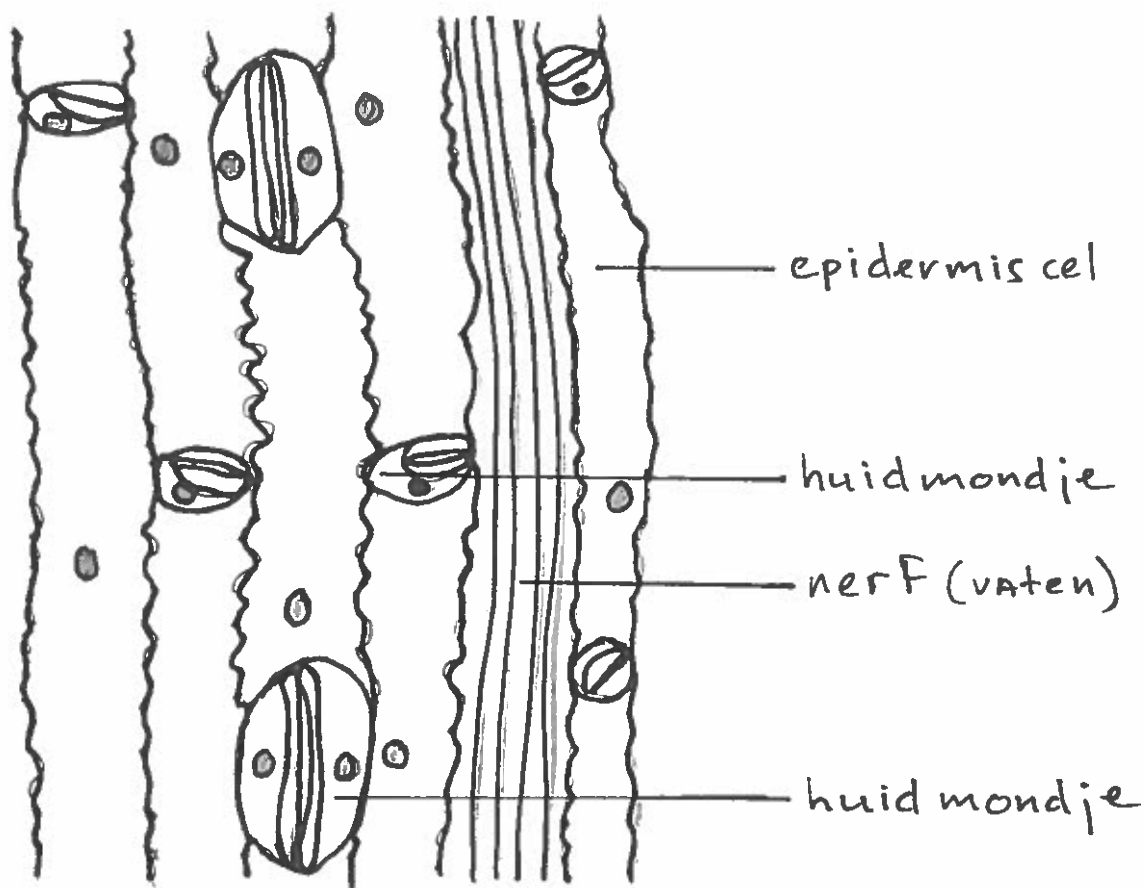


Helianthus (zonnebloem)
 stengel dwars
 doorsnede
 1-20



Zea MAIS (MAIS)
 blad dwars
 doorsnede
 1-22

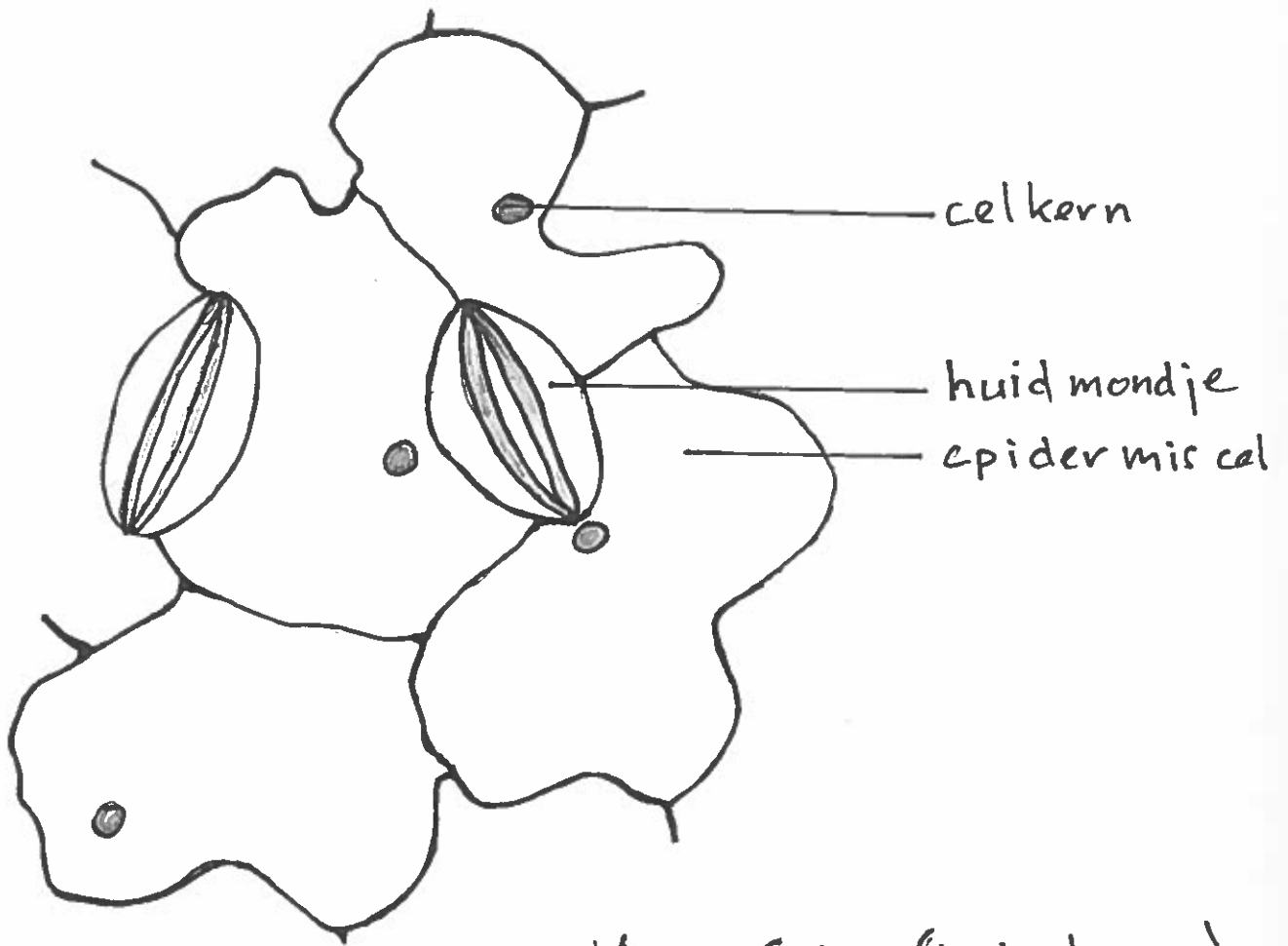




Triticum aestivum (tarwe)

blad oppervlakte
Aanzicht

1-17



Vicia faba (tuin boon)

blad oppervlakte
AANZICHT

1-23